

Adult Ileal Duplication Cyst Acting as Lead Point of Ileo-Caecal Intussusception: A Rare case of Complete Bowel obstruction in Adults

Pranesh S², Sakthivel C², Jaseema Yasmine², Gurusamy G², Haridra S² and Easwaramoorthy S¹

¹Department of Surgery, Lotus Hospital and Research Centre, Erode, India

²Department of Accident and Emergency, Lotus Hospital and Research Centre, India

*Corresponding author: Easwaramoorthy S, Department of Surgery, Lotus Hospital and Research Centre, Erode, Tamilnadu, India

Received: March 15, 2024

Published: August 06, 2024

Abstract

Enteric duplication cyst presenting as intussusception in adult and causing complete small bowel obstruction is a rare phenomenon. A 19-year-old female presented with complaints of abdominal pain, bilious vomiting, abdomen distension and constipation for 2 days. Patient had similar episodes in the past. Computed tomography of abdomen showed dilated small bowels with "Target Sign" suggestive of Ileo caecal intussusception. Patients was taken for surgery and intraoperatively it was noted to have thick-walled cystic swelling in the terminall ileum. Segmental resection done along with cyst and primary anastomosis was done. Histopathological confirmation was done as Duplication cyst.

Keywords: Duplication cyst; Intussusception; Target sign; Segemental resection

Introduction

Duplication cysts of the gastrointestinal system are one of the rare congenital anomalies affecting the GI system [1]. Mid gut (Small intestine) is the most common site followed by colonic and gastric duplications with the commonest part being distal small bowel. The presentation of enteric duplication cyst varies but more common is intestinal obstruction either due to compression or volvulus or rarely as intussusception [2] and palpable mass. These cysts can be diagnosed on Ultrasonography or Computed Tomography of the abdomen. We report a case of ileal duplication cyst presented with acute intestinal abdomen due to ileocaecal intussusception, needing surgery [2] and segmental resection in the Department of Surgery of our hospital.

Case Report

A 19-year-old female came to ER with the complaints of abdomen pain, diffuse abdomen pain more in the lower abdomen associated with vomiting and constipation for 2 days Patient had no fever. Patient had frequent similar complaints in the past requiring 1or 2 days of hospital admission. Patient has not radiologically evaluated in past. On examination abdomen distended, diffuse tenderness presents more in the right Iliac fossa region. RIF rebound tenderness is present. No guarding or rigidity. With the possible diagnosis of acute appendicitis from history, examination and age of the patient. We went on to investigate the patient, except for elevated WBC 20,200 cells/cu.mm rest of blood investigations were normal. Ultrasound abdomen showed small bowel obstruction. Hence proceeded with Computed Tomography of abdomen with IV con-



Figure 1: CECT image demonstrating telescoping of ileum into caecum with thick-walled cystic swelling in apex.

trast for detailed evaluation. Showing, grossly dilated small bowel loops with Telescoping of ileum into caecum (Figure 1).

Thick-walled cystic looking swelling in the tip of intussusception causing complete obstruction. Axial section demonstrated the classical "Target Sign" or "Doughnut Sign" (Figure 2).

With the diagnosis of Acute small bowel obstruction due to ileo-cecal intussusception [2] (Figure 3). We proceeded with diagnostic laparoscopy showing hugely dilated small bowel loops. Hence proceeded with laprotomy. Intussusception was

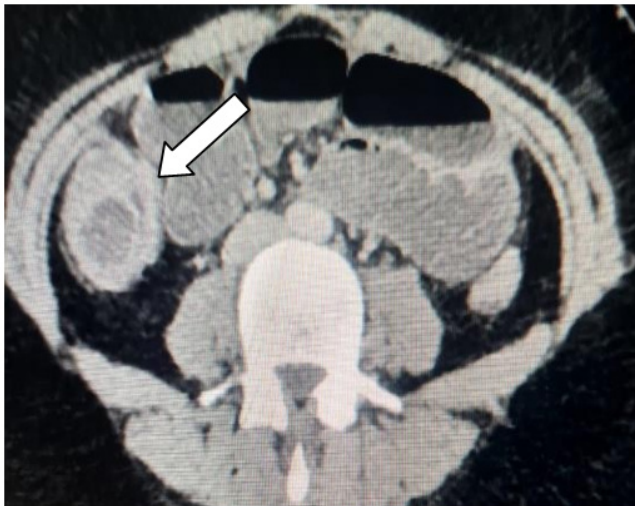


Figure 2: Axial section demonstrating dilated small bowel loops with "Target Sign".



Figure 3: Intra operative image demonstrating ileo cecal intussusception.

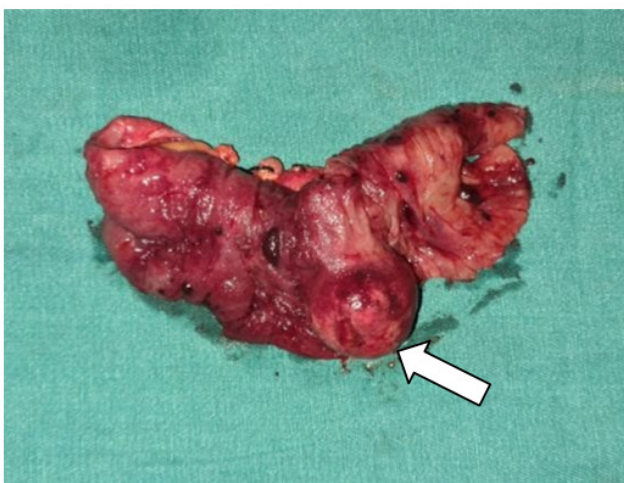


Figure 4: Cut section of the resected bowel showing Duplication cyst.

reduced. A firm immobile swelling of size 3cms palpated in the lumen of the terminal ileum over the mesenteric side. Segmental resection and primary anastomosis done.

Resected bowel opened shows firm thick-walled cystic swelling in the lumen acting as lead point for intussusception (**Figure 4**) causing obstruction. Histopathology showed features of duplication cyst of the ileum. Post-operative days were uneventful and discharged on day 4.

Discussion

Duplication cysts occur because of congenital aberration during gut development [5]. Duplication cyst of the GI system or Duplication of Alimentary Tract (DAT) as explained by Ladd et al [3] is one of the rare congenital malformations of the Gastro intestinal system that can affect anywhere from mouth to anus. It shares the morphology with GI system where it arises. DAT arises either from the mesenteric side or contra lateral side. Duplication cyst can either be communicating (<10%) or non-communicating (90%) [3]. These are usually diagnosed early in life, presentation in the adult is very rare.

Majority of the case present in infancy and childhood. The most common presentation in adults would be small bowel obstruction mainly due to compressive effects, rarely due to intussusception. In children palpable mass, bleeding due to erosion of mucosa or ulcers, intussusception, anemia [4].

Though USG abdomen is a useful diagnostic tool in detecting intussusception via, " Doughnut sign" or "Pseudo kidney sign "[6], it is more useful in children than in adults. Contrast enhanced CT has become the diagnostic tool of choice in detecting duplication cysts and its complications. In CT intussusception is seen as " Target Sign "[6]. In our case CECT shown Target sign in axial section with telescoping of ileum into cecum with cystic swelling acting as lead point.

Differential diagnosis of duplication cyst includes lymphangioma, omental cyst, mesenteric cyst, mesenteric lymphoma, Meckel's diverticulum and intramural neoplasm [2,4].

Treatment includes segmental resection of involved segment of bowel segment along with the cyst with primary anastomosis. Though multiple Duplication cysts are rare whole bowel examination should be done to exclude other pathology of bowel causing obstruction.

References

1. Fiorani C, Scaramuzza R, Lazzaro A, Biancone L, Palmieri G, Gaspari AL, et al. Intestinal duplication in adulthood: A rare entity, difficult to diagnose. *World J Gastrointest Surg*, 2011; 3: 128–130.
2. Kim HS, Sung JY, Park WS, Kim YW. An ileal duplication cyst manifested as an ileocolic intussusception in an adult. *Turk J Gastroenterol*, 2014; 25 Suppl 1: 196-198.
3. Ladd AP, Grosfeld JL. Gastrointestinal tumors in children and adolescents. *Semin Pediatr Surg*, 2006; 15: 37–47.
4. Shah N, Lizardo-Escano T, Shaaban H, Dhadham G, Karki A, Spira R. Enterogenous cyst of the small bowel causing intussusception in an adult: Case report and review of literature. *J Nat Sci Biol Med*, 2015; 6: 208–210.
5. Tamvakopoulos GS, Sams V, Preston P, Stebbings WS. Iron-deficiency anaemia caused by an enterolith-filled jejunal duplication cyst. *Ann R Coll Surg Engl*, 2004; 86: W49–W51.
6. Kim YJ, Kim YK, Jeong YJ, et al. Ileal duplication cyst: Y-configuration on in vivo sonography. *J Pediatr Surg*, 2009; 44: 1462–1464.