

Case Report

A Rare Case of Temporal Scalp Dermoidcyst with No Intracranial Extension

Hatim B^{1*} and Adil A²

¹Department of Neurosurgery, Avicenne Military Hospital, Marrakech, Morocco and Cady Ayyad University, Marrakech, Morocco

²Department of Plastic and maxilla-facial surgery, Avicenne Military Hospital of Marrakech, Marrakech, Morocco and Cady Ayyad University, Marrakech, Morocco

*Corresponding author: Hatim Belfquih, Department of Neurosurgery, Avicenne Military Hospital, 40000, Marrakech, Morocco. Tel: +(212) 661338623; E-mail: hatimbelfquih@gmail.com

Received: July 05, 2020

Published: July 31, 2020

Case Report

We report a case of 37-year-old female patient presented with temporal scalp swelling since birth. The swelling increased in size very slowly and progressively. On examination, there was a soft, fluid-filled lesion over the temporal bone, which was non-tender and non-pulsatile. There was no bruit over the swelling. Magnetic resonance imaging of the brain revealed extracranial well defined cystic swelling over the left temporal bone with no intracranial extension, measuring approximately 20×45×30 mm in transverse, anterior-posterior, and craniocaudal dimen-

sions. It was cystic in appearance, with hyperintense signals on T2-weighted sequence, with no flow voids (Figure 1a) and hypointense signals on T1-weighted sequences (Figure 1b) showing no surrounding edema on fluid-attenuated inversion recovery (FLAIR). There was no contrast enhancement (Figure 1c). Intraoperatively, a soft, cystic, fluid-filled lesion over temporal bone, which was densely adherent to underlying tissue (Figure 1d). Cyst was excised completely with no postoperative complications. On histopathology it was dermoidcyst.

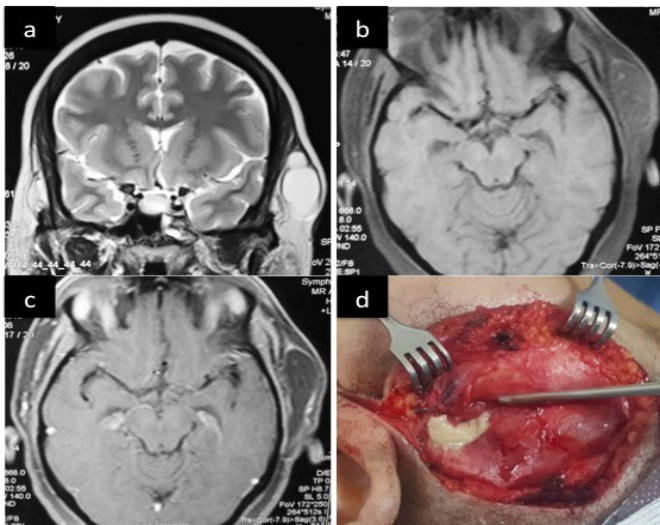
Dermoidcysts are considered congenital lesions, but not all of them are diagnosed at birth [1]. Dermoidcysts are benign soft tissue tumors that develop from abnormal sequestration and inclusion of the surface ectoderm along the lines of skin fusion during embryologic development [2]. In the literature, midline scalp cysts present a higher probability of intracranial extension because they are on a line of embryonic fusion. Early resection may avoid more extensive surgery, and a shorter skin incision with less risk of wound infection may allow an improved cosmetic outcome [3].

Conflicts of Interest

No conflicts of interest.

References

1. Orozco-Covarrubias L, Lara-Carpio R, Saez-De-Oca-riz M, Duran-McKinster C, Palacios-Lopez C, et al. Dermoidcysts: a report of 75 pediatric patients. *Pediatr Dermatol.* 2013;30:706-711.
2. Reissis D, Pfaff MJ, Patel A, Steinbacher DM. Craniofacial dermoidcysts: histological analysis and inter-site-comparison. *Yale J Biol Med.* 2014;87:349-357.
3. Khalid S, Ruge J. Considerations in the management of congenital cranial dermoidcysts. *J Neurosurg.* 2017;20:30-34.



sions. It was cystic in appearance, with hyperintense signals on T2-weighted sequence, with no flow voids (Figure 1a) and hypointense signals on T1-weighted sequences (Figure 1b) show-